



# GMT MONTHLY MEMBERSHIP PROGRESS REPORT

Results as of: 4/30/2017

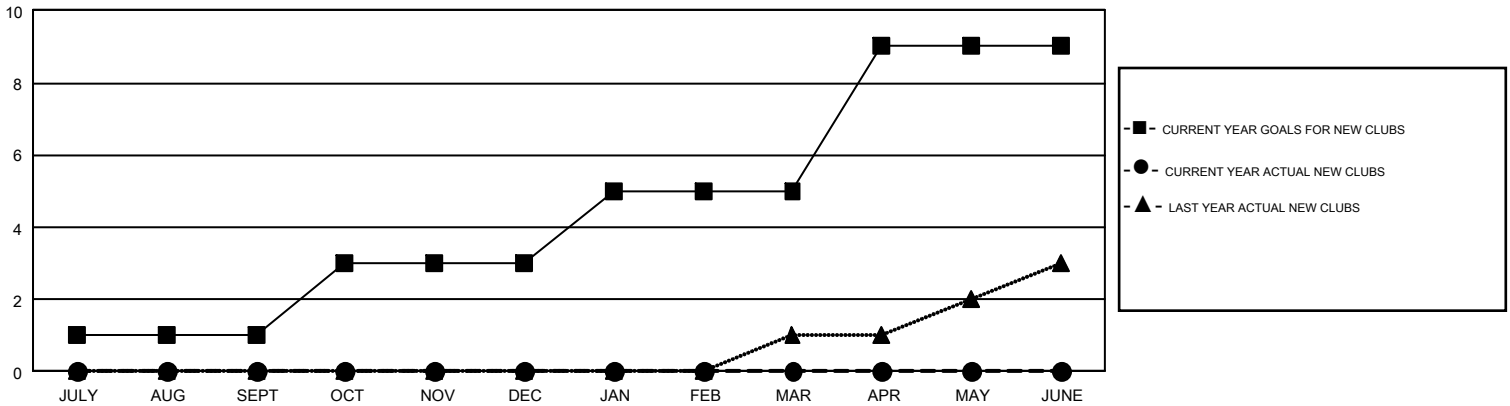
## GMT Constitutional Area 7, Group B

GMT: HUCK TAINGAHUE

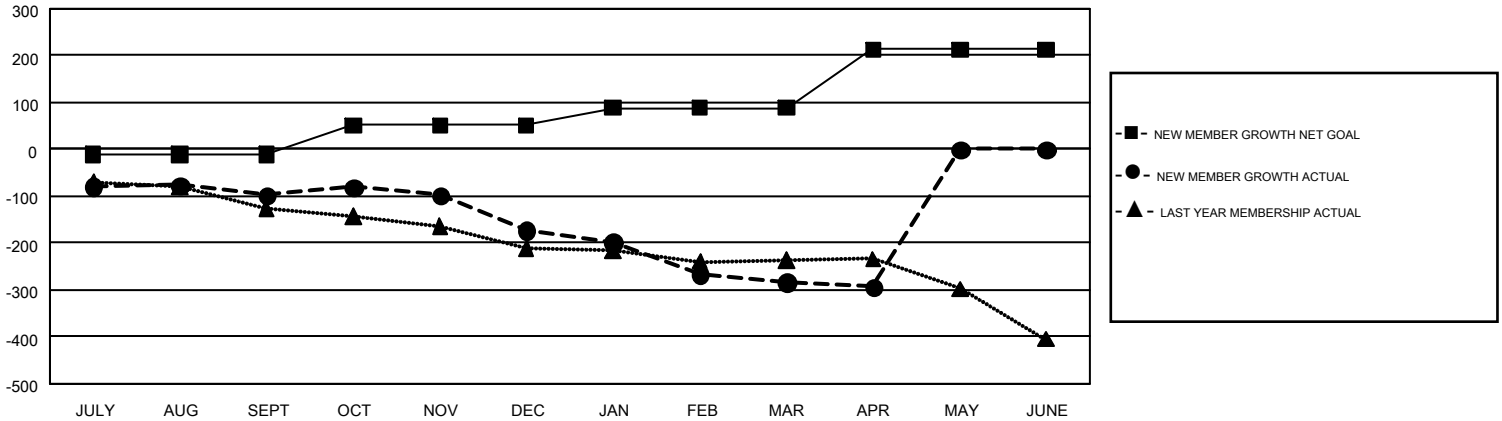
REPORT DOES NOT INCLUDE CLUBS IN UNDISTRICTED AREAS.

Clubs				Members			
RESULTS FOR 2016-2017				RESULTS FOR 2016-2017			
QUARTER	NEW CLUB GOAL	NEW CLUBS	DROPPED CLUBS	QUARTER	NEW MEMBER GROWTH NET GOAL (not reinstated or transfers)	NEW MEMBER GROWTH ACTUAL (not reinstated or transfers)	DROPPED MEMBERS ACTUAL (including transfers)
JULY/AUG/SEPT	1	0	3	JULY/AUG/SEPT	-11	192	290
OCT/NOV/DEC	2	0	2	OCT/NOV/DEC	62	180	254
JAN/FEB/MAR	2	0	2	JAN/FEB/MAR	37	130	242
APR/MAY/JUNE	4	0	1	APR/MAY/JUNE	125	71	81

GOALS AND ACTUAL NEW CLUBS CUMULATIVE



GOALS AND ACTUAL MEMBERS CUMULATIVE



DROPPED CLUBS: 8	226 CLUBS OF 373 ADDED 1 OR MORE NEW MEMBERS	<b>GENDER DISTRIBUTION</b> MALE                    6,906 (69.84%) FEMALE                   2,983 (30.16%)
<b>DROPPED MEMBERS</b> DECEASED                    119 CLUB CANCELLED                25 OTHER                            723 <hr/> TOTAL                            867	<a href="#">CLICK HERE FOR CUMULATIVE MEMBERSHIP DATA</a>	TOTAL FAMILY UNIT MEMBERS                    854  FAMILY MEMBERS PAYING HALF DUES                    432